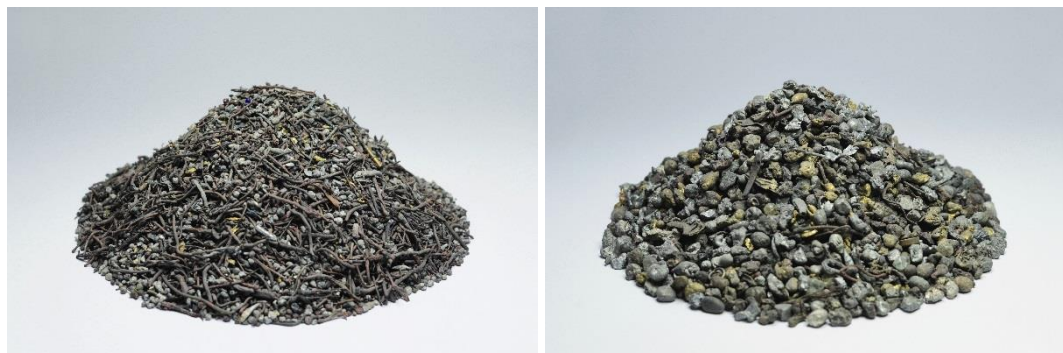


## Nonferrous Metals heavy 0.3–1.2 mm / 1.2–4 mm / 4–8 mm / 8–15 mm



Photos: NF-Metals heavy (left 1.2-4mm; right 4-8mm)

Particle shape	Granules, Rods
Humidity	<0.5%
Metal content	>98%
Packaging unit	Bulk (truck load) Big Bags (0.3-1.2mm)

### Typical concentrations of selected elements:

Cu	45 – 70%
Zn	10 – 25%
Pb	2 – 4%
Ag	2'800 – 4'000 g/t
Au	80 – 200 g/t