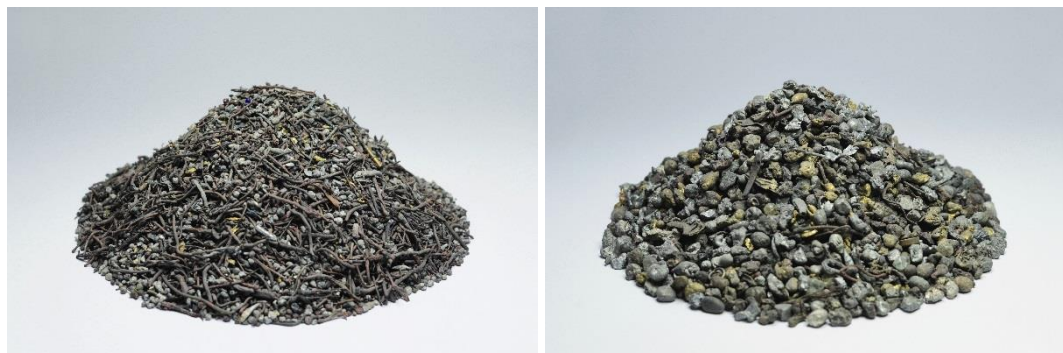


## Nonferrous Metals heavy 0.2–1 mm / 1–5 mm / 5–8 mm / 8–15 mm



Photos: NF-Metals heavy (left 1-5mm; right 5-8mm)

Particle shape	Granules, Rods
Humidity	<0.5%
Metal content	>98%
Packaging unit	Bulk (truck load) Big Bags (0.2–1 mm)

### Typical concentrations of selected elements:

Cu	45 – 70%
Zn	10 – 25%
Pb	2 – 4%
Ag	2'800 – 4'000 g/t
Au	80 – 200 g/t